

Division using factors

Division using Factors

Watch the video: 'Division Using Factors'

You will need to click on the link below to access the video.

<https://whiterosemaths.com/homelearning/year-6/week-5/>

Once you have watched the video, please choose your starting question and then complete as many as you can in 40 minutes.

Division using factors

1 Complete the divisions using factors.

a)



$$260 \div 20 = \boxed{}$$

b)



$$360 \div 30 = \boxed{}$$

1 c)



$$240 \div \boxed{} = \boxed{}$$

d)



$$480 \div \boxed{} = \boxed{}$$

2 Jack and Rosie are calculating $816 \div 48$

Jack divides by 8 and then by 6

Rosie divides by 12 and then by 4

a) Show that they get the same answer.

b) Explain why Jack and Rosie get the same answer.

c) Which is the easiest method? Why?

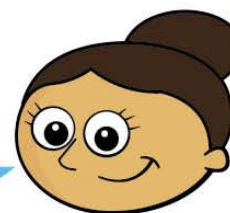
3 Mo and Dora are calculating $2,560 \div 16$



Mo

I will
divide by 10, then
divide by 6

I will divide
by 4, then divide
by 4 again.



Dora

Who is correct? Show your workings.

_____ is correct.

4

Ron is calculating $3,024 \div 36$

a) Tick the methods that would give the correct answer.

$$3,024 \div 6 \div 6$$

☐

$$3,024 \div 18 \div 18$$

☐

$$3,024 \div 9 \div 4$$

☐

b) What other methods could Ron use to calculate $3,024 \div 36$?

5 Use factors to complete these divisions.

a) $360 \div 40 =$

b) $625 \div 25 =$

5 c) $1,275 \div 15 =$

d) $7,200 \div 18 =$

6 These divisions give the same answer.

Fill in the gaps.

$$888 \div 8 \div 3$$

$$888 \div 6 \div \square$$

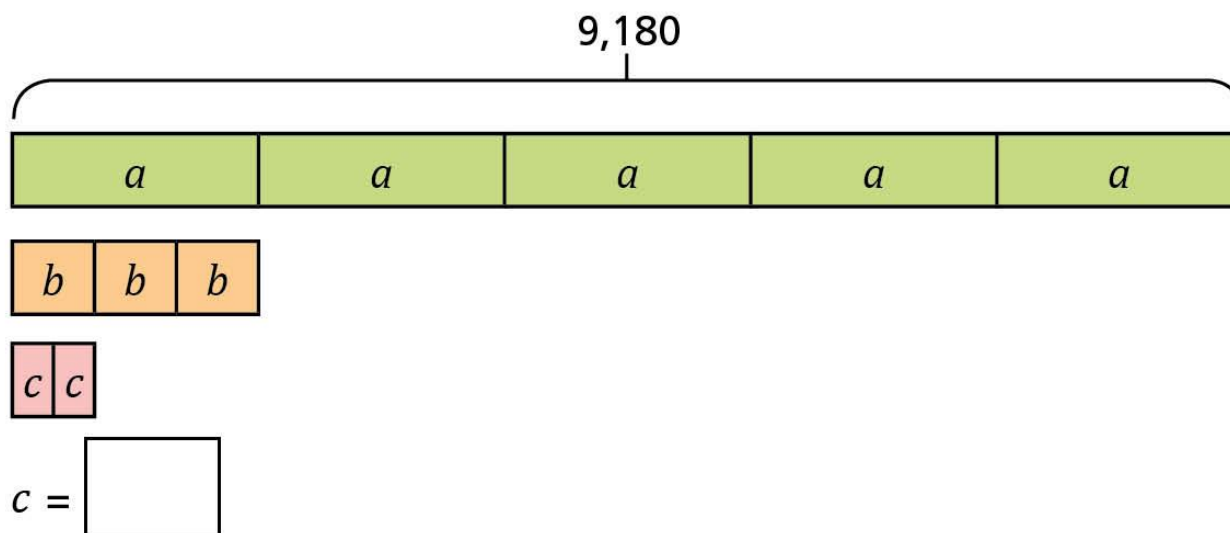
$$888 \div \square$$

$$888 \div 2 \div 6 \div \square$$

What is the answer?

7

a) Calculate the value of c .

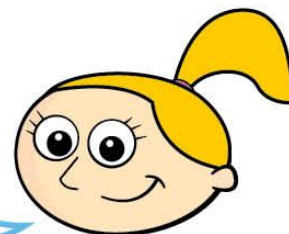


b) How did you work this out? Compare methods with a partner.



8 Eva is thinking of a number.

I multiply it by 6,
then multiply the answer
by 8, then subtract 500.
The result is 9,100



What number did Eva start with?

