



Designing
and making a
Mayan Temple

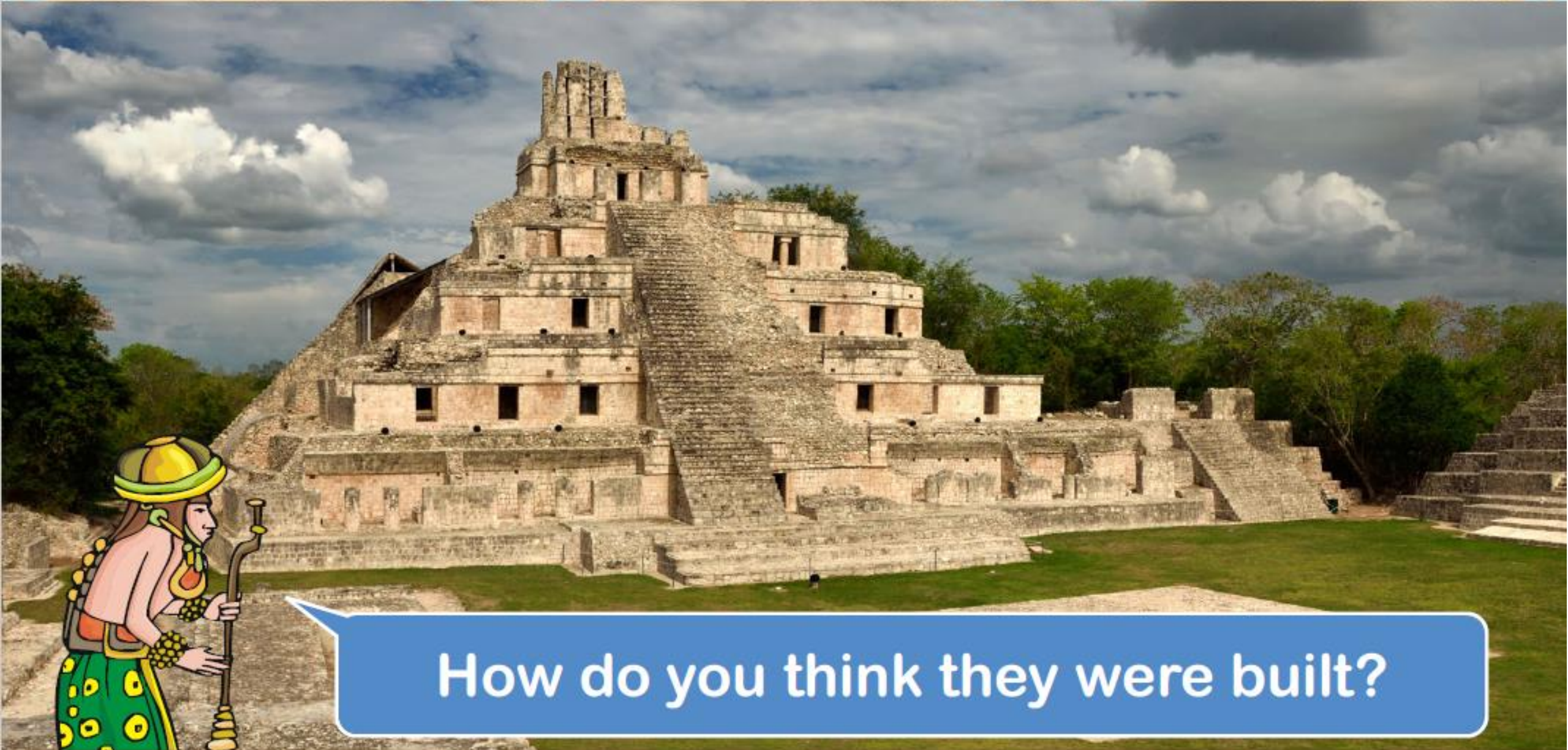
What did
Mayan
temples look
like?



How do you
know?



Mayan temples were often pyramid-shaped. Can you see other shapes used in their construction?



How do you think they were built?

Your task today is to design, make and evaluate your own model of a Mayan temple.

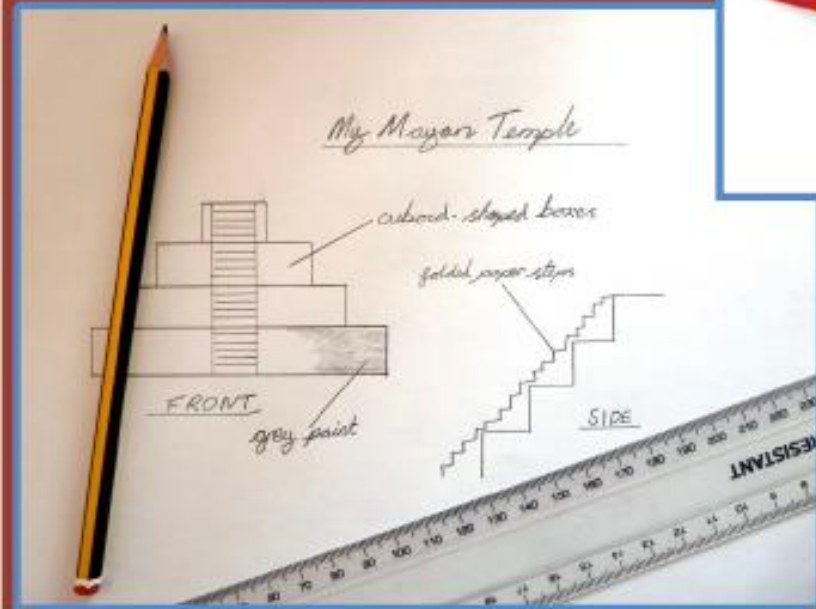
How do you think you could do this?

What materials could you use?

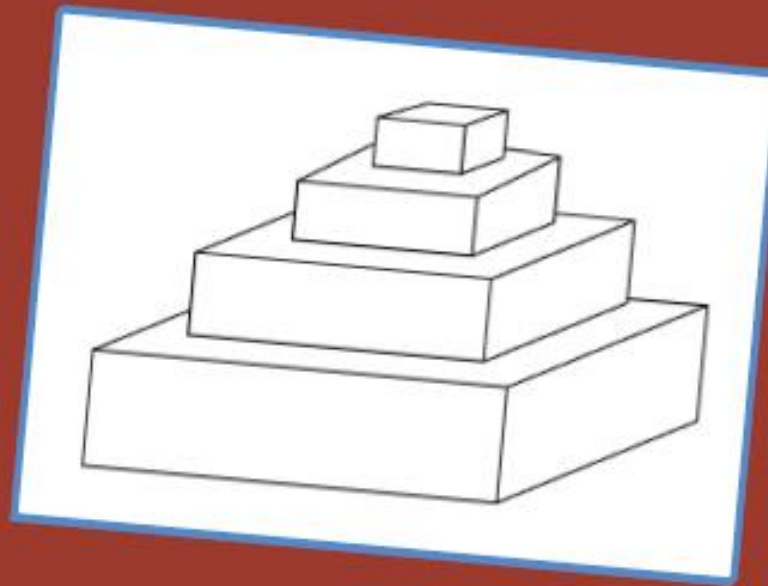
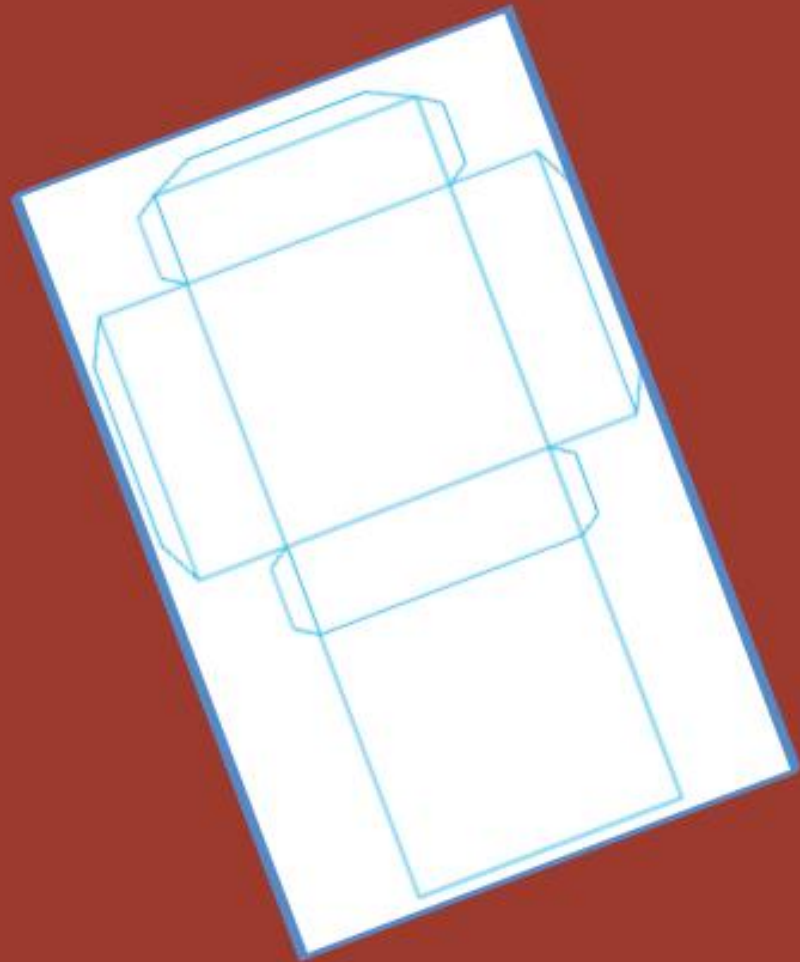


How could you make sure that the structure would be sturdy?

You could draw, use building bricks or playdough to design your temple...



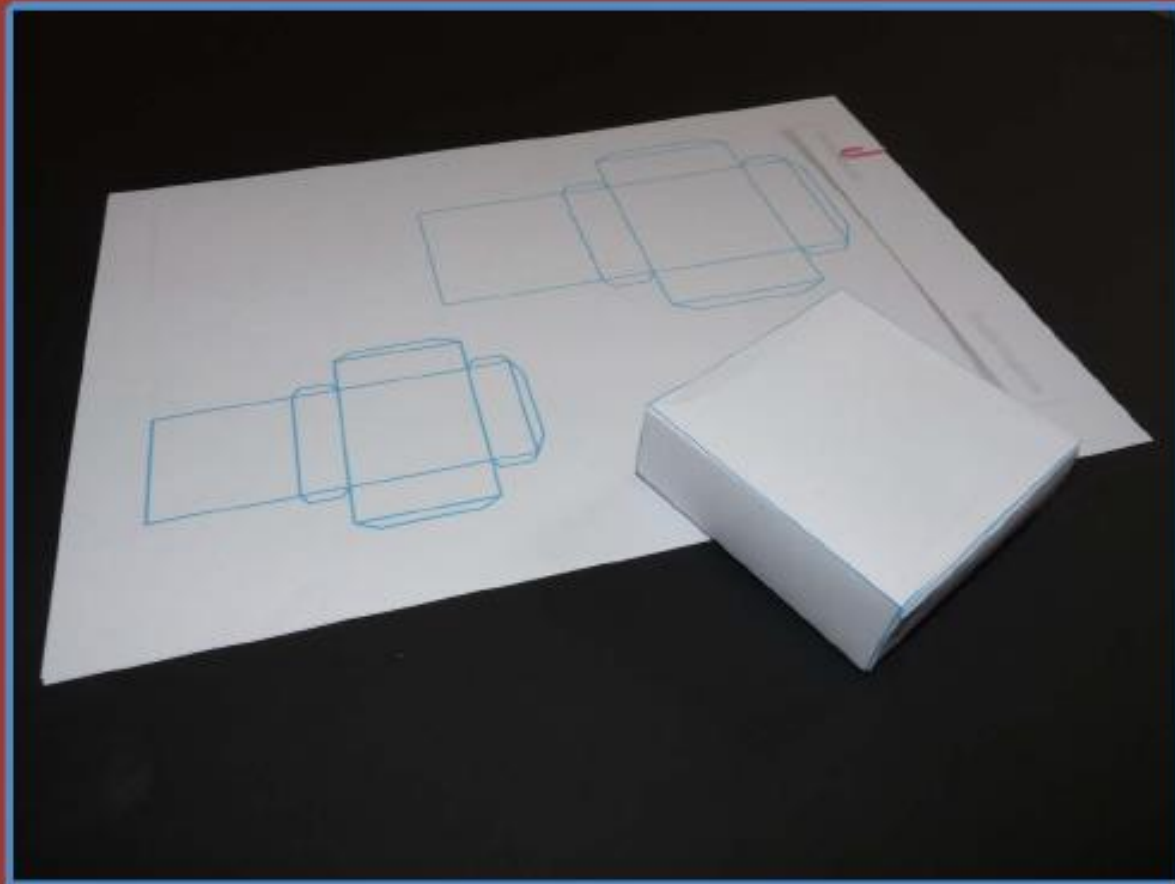
You could design 3D nets to make cuboids for each layer of the temple...



You could use cardboard boxes, paper or foam sheets to make your design...



If you are making 3D nets from paper, you will need to make sure that each layer is sturdy. How could you strengthen these paper cuboids?



You will also need to think about how you will join the different parts together. Which of these would be best?



Is there anything else you could use?



Once you have the basic structure for your temple, you can add the details. All Mayan pyramids would have had steps leading up to the top chamber.



What could you use to create these steps?



You will need to think about how you will decorate your temple once you have worked out how you will create the structure.

What colour will your temple be?

How else could you decorate your temple?



Will you add anything, such as trees or people in the surrounding area?



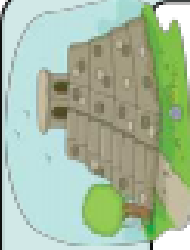
What do you need to think about while you are designing your temple?

What will you do if something goes wrong while you are making your temple?

How will you make sure that your temple is of a high quality?



MY MAYAN TEMPLE DESIGN



Draw a labelled picture of your design:

What materials and tools will you need?

How will you join the different parts together?

How will you make sure your temple is sturdy?

How will you decorate your temple?

MY MAYAN TEMPLE EVALUATION



What did you most enjoy about making your Mayan temple?



What did you find most difficult when you were making your Mayan temple?



What changes did you have to make to your design when you were making your temple?



How pleased are you with how your temple looks? Why?



How pleased are you with how sturdy your temple is? Why?



What would you change if you were to make your temple again? Why?



How many marks out of ten would you give your Mayan temple? Explain your answer.

10

